

CLOSED STRAND SOCKETS

MATERIAL SPECIFICATION

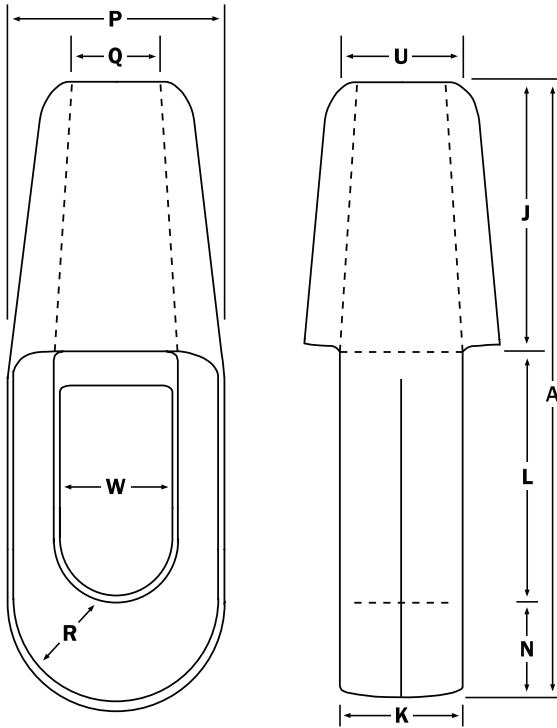
- Sockets meet ASTM A148
- All sockets are magnetic particle inspected at critical areas and proof-tested on special order

TOLERANCES

- Dimensions under 4": $\pm 1/16"$
- Dimensions over 4": $\pm 1/8"$
- V and O dimensions: $\pm 1/8"$
- Q (smaller sizes): $\pm 1/32"$

NOTE

Dimensions and tolerances shown are prior to galvanize.



Strand Diameter (in.)	Dimensions (in.)										Weight Each (lbs.)
	A	J	K	L	N	P	Q	R	U	W	
1/2	6	2 7/8	1	2 1/2	5/8	2 1/2	3/4	1 1/4	1 1/2	1 3/8	2.2
9/16 - 5/8	7 5/16	3 9/16	1 1/4	3	3/4	3	13/16	1 1/2	1 7/8	1 3/4	4.0
11/16 - 3/4	8 5/8	4 1/4	1 9/16	3 1/2	7/8	3 3/8	15/16	1 11/16	2	2 1/8	7.0
13/16 - 7/8	10	4 7/8	1 3/4	4	1 1/8	3 3/4	1 1/16	1 7/8	2 1/8	2 1/4	9.5
15/16 - 1	11	5 1/8	2	4 5/8	1 1/4	4	1 1/4	2	2 3/8	2 1/2	16.5
1 1/16 - 1 1/8	12	5 1/4	2 1/4	6 1/4	1 1/2	4 3/8	1 1/2	2 3/16	2 1/2	2 3/4	19
1 3/16 - 1 1/4	13	5 1/2	2 3/4	6	1 1/2	4 1/2	1 5/8	2 1/2	2 3/4	2 7/8	21
1 5/16 - 1 3/8	14 1/8	6	3	6 1/2	1 3/4	4 7/8	1 3/4	2 3/4	3	3 1/8	30
1 7/16 - 1 5/8	15 5/8	6 1/8	3 1/4	7 1/2	2	6	2	3 1/8	4	3 3/8	46
1 11/16 - 1 3/4	16 3/4	6 1/2	3 3/4	8	2 1/4	6 3/4	2 1/8	3 1/4	4	3 3/4	56
1 13/16 - 1 7/8	17 7/8	6 3/4	4	8 3/4	2 3/8	7 1/8	2 1/4	3 7/16	4 1/2	4 1/4	67
1 15/16 - 2	18 7/8	7	4 1/4	9 1/2	2 3/8	7 1/2	2 3/8	3 5/8	4 3/4	4 1/2	78
2 1/16 - 2 1/8	20 1/4	7 3/4	4 1/2	10	2 1/2	8	2 1/2	3 7/8	4 3/4	4 3/4	96
2 3/16 - 2 1/4	21 1/8	7 7/8	4 3/4	10 1/2	2 3/4	8 1/2	2 5/8	4	5 1/2	5	114
2 5/16 - 2 3/8	22 1/8	8 1/4	5	11	2 7/8	9	2 3/4	4 1/4	6	5 1/2	134
2 7/16 - 2 9/16	23 1/4	8 1/2	5 1/4	11 1/2	3 1/4	9 3/8	3	4 11/16	6 1/2	5 1/2	167
2 5/8 - 2 3/4	24 1/4	9	5 3/4	12	3 1/4	10 1/4	3 1/8	4 3/4	6 3/4	6	182
2 7/8 - 3	26	10	6	12 1/4	3 3/4	11	3 3/8	5 5/16	7	6 1/2	242
3 1/8 - 3 1/4	26 3/4	10 1/2	6 1/2	12 1/2	3 3/4	11 3/4	3 3/4	5 3/4	7 1/2	7 1/4	282
3 3/8 - 3 1/2	27 3/4	10 3/4	7	13	4	12 1/2	4	6 1/8	8	8	343
3 5/8 - 3 3/4	28 3/4	11	7 1/2	13 1/2	4 1/4	13 1/2	4 1/4	6 1/2	8 1/2	8 1/4	390
3 7/8 - 4	29 3/4	11 1/4	7 3/4	14	4 1/2	14	4 1/2	7	8 3/4	8 1/2	465
4 1/8 - 4 3/8	32 1/2	11 3/4	7 7/8	17 1/8	3 5/8	14 1/4	5 1/4	7	9 1/2	8 1/2	460
4 1/2 - 4 3/4	34 5/8	12 1/2	8 1/8	17 3/4	4 3/8	14 1/2	5 3/4	7 1/4	10 1/2	8 3/4	547
4 7/8 - 5 1/8	38 1/8	13 3/4	8 3/8	19 1/2	4 7/8	14 3/4	6 1/4	7 1/4	12	9 1/4	671
5 1/4 - 5 1/2	41 1/2	15	8 5/8	21	5 1/2	15	6 1/2	8	13	9 3/4	910