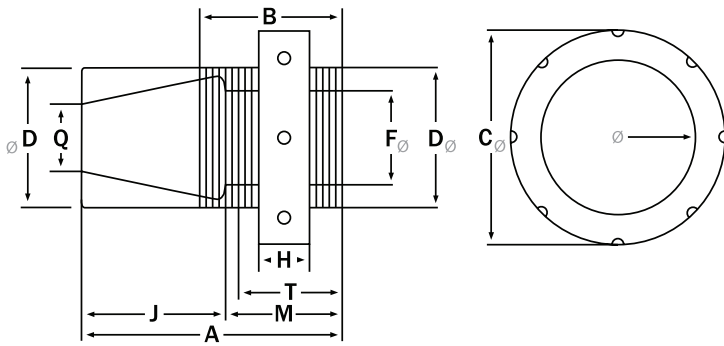


TYPE 7 ANCHOR SOCKETS ZINC-POURED



Type 7 Anchor Sockets are used for structural strand and rope. The anchor connection is affected through the bearing of an adjustable spanner nut. They are furnished with or without internal threads (internal threads are used to accommodate a tensioning jack).

TOLERANCES

- Dimensions under 4": $\pm 1/16"$
- Dimensions over 4": $\pm 1/8"$
- Q (smaller sizes): $\pm 1/32"$

NOTE

Dimensions and tolerances shown are prior to galvanize.

Rope Diameter (in.)	Dimensions (in.)										Weight Each (lbs.)	Strand Diameter (in.)
	A	B	C	D	F	H	J	M	Q	T		
1/2	5 1/16	2 1/2	3 7/8	2 5/8	1	1/2	2 7/8	2 1/16	7/8	1 9/16	6	1/2
5/8	6	2 7/8	4 1/16	2 15/16	1 1/4	5/8	3 9/16	2 5/16	1	1 13/16	8	9/16 - 5/8
3/4	6 13/16	3 1/4	4 1/2	3 1/4	1 1/2	3/4	4 3/16	2 1/2	1 1/8	2	11.5	11/16 - 3/4
7/8 - 1	7 3/4	3 1/2	5 1/16	3 9/16	1 3/4	7/8	4 7/8	2 3/4	1 1/4	2 1/4	15.5	13/16 - 7/8
1 1/8	8 11/16	3 3/4	5 1/2	3 7/8	2	1	5 9/16	3	1 3/8	2 1/2	20.5	15/16 - 1
1 1/4	9 1/4	4 1/2	5 15/16	4 3/16	2 1/4	1 1/8	5 7/8	3 1/4	1 1/2	2 3/4	25.5	1 1/16 - 1 1/8
1 3/8	8 7/8	4 3/4	6 3/16	4 3/16	2 1/2	1 1/4	5 1/4	3 1/2	1 5/8	3	24	1 3/16 - 1 1/4
1 1/2	9 3/8	5 1/2	6 5/8	4 7/16	2 3/4	1 3/8	5 1/2	3 3/4	1 3/4	3 1/4	30	1 5/16 - 1 3/8
1 5/8	9 7/8	6	7 1/8	4 7/8	3	1 1/2	5 3/4	4	1 7/8	3 1/2	38.5	1 7/16 - 1 1/2
1 3/4	10 3/8	6 1/4	7 9/16	5 1/8	3 1/4	1 5/8	6	4 1/4	2	3 3/4	45	1 9/16 - 1 5/8
1 7/8 - 2	10 7/8	6 3/8	8	5 3/8	3 1/2	1 3/4	6 1/4	4 1/2	2 1/8	4	52.5	1 11/16 - 1 3/4
2 1/8	11 3/8	6 3/4	8 1/2	5 3/4	3 3/4	1 7/8	6 1/2	4 3/4	2 1/4	4 1/4	63	1 13/16 - 1 7/8
2 1/4	11 1/2	6	9 1/4	6 1/4	4	2	6 3/4	4 3/4	2 5/16	4 1/4	75.5	1 15/16 - 2
2 3/8	12 1/8	7 1/4	9 9/16	6 5/16	4	2 1/8	7	5	2 1/2	4 1/2	88	2 1/16 - 2 1/8
2 1/2	12 5/8	7 1/2	10 1/8	6 11/16	4 1/4	2 1/4	7 1/4	5 1/4	2 3/4	4 3/4	98.5	2 3/16 - 2 1/4
2 5/8	13 1/8	8	10 11/16	7 1/16	4 1/2	2 3/8	7 1/2	5 1/2	2 3/4	5	118.5	2 5/16 - 2 3/8
2 3/4 - 2 7/8	13 5/8	8 1/4	11 9/16	7 9/16	4 3/4	2 9/16	7 3/4	5 3/4	2 15/16	5 1/4	140.5	2 7/16 - 2 9/16
3	14 1/4	8 1/2	12 5/16	8 1/8	5	2 3/4	8 1/8	6	3 1/8	5 1/2	174.5	2 5/8 - 2 3/4
3 1/4	15 5/8	9 1/4	13 1/4	8 3/4	5 1/2	3	8 7/8	6 5/8	3 3/8	6 1/8	225	2 7/8 - 3
3 1/2	16 7/8	9 1/2	14 3/8	9 3/4	6	3 1/4	9 3/4	7	3 3/4	6 1/2	292	3 1/8 - 3 1/4
3 3/4	17 3/4	9 3/4	15 1/4	10 3/8	6 1/4	3 1/2	10 3/8	7 1/4	4	6 3/4	361	3 3/8 - 3 1/2
4	19 3/4	10	16 1/2	11 1/4	6 3/4	3 3/4	11 1/8	8 1/2	4 1/4	8	461	3 5/8 - 3 3/4
4 1/4	20 1/8	10 3/4	17 1/4	11 3/4	7 1/4	4	11 3/4	8 1/4	4 1/2	7 3/4	522	3 7/8 - 4
4 1/2 - 4 3/4	20 1/4	10 3/4	16 1/2	11 3/4	7 1/4	4 3/8	11 3/4	8 1/4	5	7 3/4	487	4 1/8 - 4 3/8
5 - 5 1/4	22	11 3/4	17 1/2	12 1/2	7 3/4	4 3/4	12 1/2	9 1/4	5 3/8	8 3/4	575	4 1/2 - 4 3/4
5 1/2 - 5 3/4	23 1/2	12	18 3/4	13 1/2	8	5 1/8	13 3/4	9 1/2	5 7/8	9	734	4 7/8 - 5 1/8
6	25	12 1/4	19 1/2	14	8 1/4	5 1/2	15	9 3/4	6 1/4	9 1/4	836	5 1/4 - 5 1/2