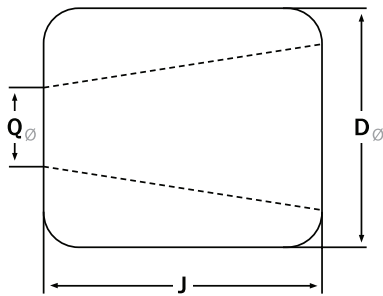


TYPE 8 ANCHOR SOCKETS ZINC-POURED



Type 8 Anchor Sockets are used for structural strand and rope as a bearing-type socket. The assembly length is adjusted by shimming at the bearing surface.

TOLERANCES

- Dimensions under 4": $\pm 1/16"$
- Dimensions over 4": $\pm 1/8"$
- Q (smaller sizes): $\pm 1/32"$

NOTE

Dimensions and tolerances shown are prior to galvanize.

Rope Diameter (in.)	Dimensions (in.)			Approx. Weight (lbs.)	Strand Diameter (in.)
	D	J	Q		
1/2	2 5/8	2 7/8	7/8	2.5	1/2
5/8	2 15/16	3 9/16	1	4	9/16 - 5/8
3/4	3 1/4	4 3/16	1 1/8	5.5	11/16 - 3/4
7/8 - 1	3 9/16	4 7/8	1 1/4	8	13/16 - 7/8
1 1/8	3 7/8	5 9/16	1 3/8	10.5	15/16 - 1
1 1/4	4 1/8	5 7/8	1 1/2	12.5	1 1/16 - 1 1/8
1 3/8	4	5 1/4	1 5/8	10	1 3/16 - 1 1/4
1 1/2	4 3/16	5 1/2	1 3/4	11	1 5/16 - 1 3/8
1 5/8	4 1/2	5 3/4	1 7/8	13	1 7/16 - 1 1/2
1 3/4	4 13/16	6	2	16.5	1 9/16 - 1 5/8
1 7/8 - 2	5 1/8	6 1/4	2 1/8	20	1 11/16 - 1 3/4
2 1/8	5 1/2	6 1/2	2 1/4	24	1 13/16 - 1 7/8
2 1/4	5 15/16	6 3/4	2 3/8	31	1 15/16 - 2
2 3/8	6 5/16	7	2 1/2	37	2 1/16 - 2 1/8
2 1/2	6 11/16	7 1/4	2 3/4	44	2 3/16 - 2 1/4
2 5/8	7 1/16	7 1/2	2 3/4	53	2 5/16 - 2 3/8
2 3/4 - 2 7/8	7 9/16	7 3/4	2 15/16	62	2 7/16 - 2 9/16
3	8 1/8	8 1/8	3 1/8	76	2 5/8 - 2 3/4
3 1/4	8 3/4	8 7/8	3 3/8	99	2 7/8 - 3
3 1/2	9 11/16	9 3/4	3 3/4	130	3 1/8 - 3 1/4
3 3/4	10 3/8	10 3/8	4	161	3 3/8 - 3 1/2
4	11 1/16	11 1/8	4 1/4	194	3 5/8 - 3 3/4
4 1/4	11 3/4	11 3/4	4 1/2	233	3 7/8 - 4
4 1/2 - 4 3/4	11 3/4	11 3/4	5 1/4	227	4 1/8 - 4 3/8
5 - 5 1/4	12 1/2	12 1/2	5 3/4	266	4 1/2 - 4 3/4
5 1/2 - 5 3/4	13 1/2	13 3/4	6 1/4	339	4 7/8 - 5 1/8
6	14	15	6 1/2	390	5 1/4 - 5 1/2

