

OPEN BRIDGE SOCKETS

MATERIAL SPECIFICATION

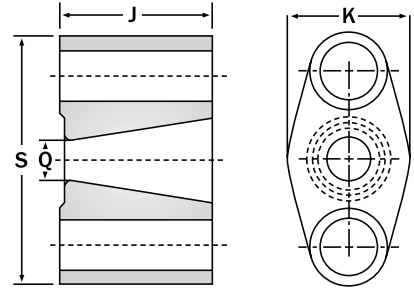
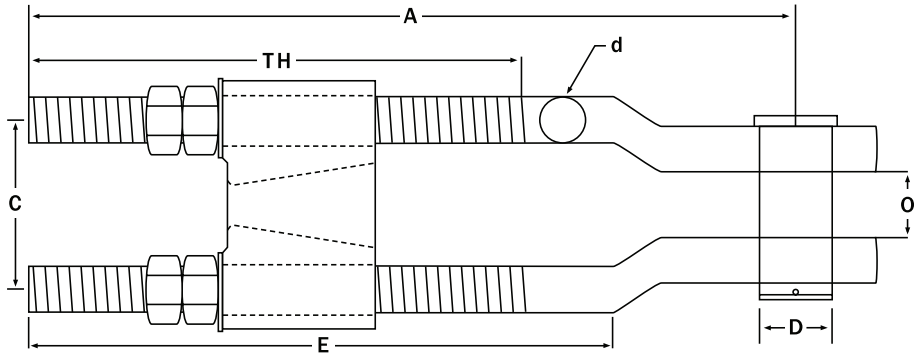
- Sockets meet ASTM A148
- All sockets are magnetic particle inspected at critical areas and proof-tested on special order

TOLERANCES

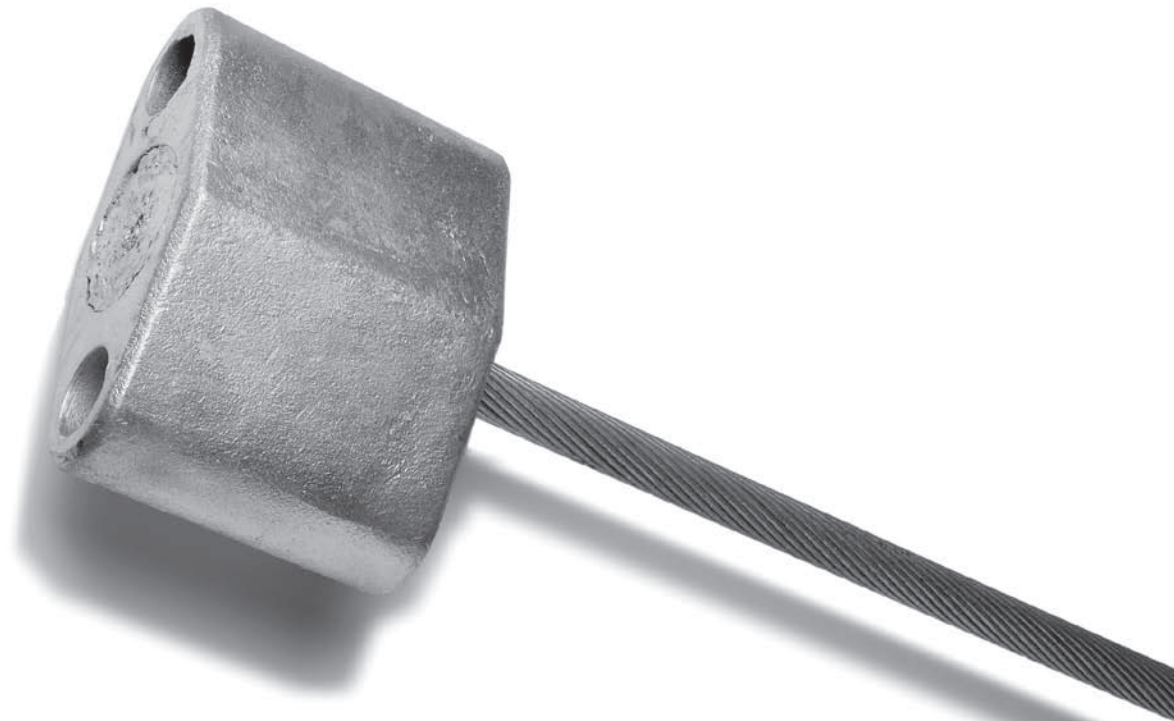
- Dimensions under 4": $\pm 1/8"$
- Dimensions over 4": $\pm 1/4"$
- Q (smaller sizes): $\pm 1/32"$
- D: + 0 - 1/32" in a self-colored socket

NOTE

Dimensions and tolerances shown are prior to galvanize.



| Rope Dia. | Strand Dia. | Std. Take-Up | A for Take-Up | | | | | C | d | D | E for Take-Up | | | | |
|-------------|---------------|--------------|---------------|-----|-----|-----|-----|---------|-------|--------|---------------|--------|---------|---------|---------|
| | | | Std. | 48" | 72" | 84" | 96" | | | | Std. | 48" | 72" | 84" | 96" |
| 1/2 | 1/2 | 9 | 20 | 59 | 83 | 95 | 107 | 3 3/8 | 5/8 | 1 3/16 | 14 1/2 | 53 1/2 | 77 1/2 | 89 1/2 | 101 1/2 |
| 5/8 | 9/16-5/8 | 9 | 22 | 61 | 85 | 97 | 109 | 4 3/8 | 3/4 | 1 3/8 | 15 | 54 | 78 | 90 | 102 |
| 3/4-7/8 | 11/16-3/4 | 9 | 23 | 62 | 86 | 98 | 110 | 4 3/4 | 1 | 1 5/8 | 16 1/2 | 55 1/2 | 79 1/2 | 91 | 103 |
| 1 | 13/16-7/8 | 9 | 25 | 64 | 88 | 100 | 112 | 5 3/16 | 1 1/8 | 2 | 17 | 56 | 80 | 92 | 104 |
| 1 1/8 | 15/16-1 | 9 | 26 | 65 | 89 | 101 | 113 | 5 3/4 | 1 1/4 | 2 1/4 | 18 1/2 | 57 1/2 | 81 1/2 | 93 | 105 |
| 1 1/4 | 1 1/16-1 1/8 | 12 | 30 | 66 | 90 | 102 | 114 | 6 | 1 3/8 | 2 1/2 | 21 1/2 | 57 1/2 | 81 1/2 | 94 | 106 |
| 1 3/8 | 1 3/16-1 1/4 | 12 | 33 | 69 | 93 | 105 | 117 | 6 3/4 | 1 5/8 | 2 3/4 | 22 1/2 | 58 1/2 | 82 1/2 | 95 | 107 |
| 1 1/2 | 1 5/16-1 3/8 | 12 | 34 | 70 | 94 | 106 | 118 | 7 3/16 | 1 3/4 | 3 | 23 1/2 | 59 1/2 | 83 1/2 | 96 | 108 |
| 1 5/8-1 3/4 | 1 7/16-1 1/2 | 15 | 39 | 72 | 96 | 108 | 120 | 8 1/8 | 2 | 3 1/2 | 27 | 60 | 84 | 97 | 109 |
| 1 7/8-2 | 1 9/16-1 3/4 | 15 | 42 | 75 | 99 | 111 | 123 | 9 | 2 1/4 | 3 3/4 | 28 1/2 | 61 1/2 | 85 1/2 | 98 | 110 |
| 2 1/8-2 1/4 | 1 13/16-2 | 18 | 50 | 80 | 104 | 116 | 128 | 10 1/4 | 2 1/2 | 4 1/4 | 33 | 63 | 87 | 99 | 111 |
| 2 3/8-2 1/2 | 2 1/16-2 1/4 | 18 | 52 | 82 | 106 | 118 | 130 | 11 1/2 | 2 3/4 | 4 3/4 | 35 1/2 | 64 1/2 | 89 1/2 | 101 | 113 |
| 2 5/8-2 3/4 | 2 5/16-2 3/8 | 18 | 54 | 84 | 108 | 120 | 132 | 12 3/4 | 3 | 5 | 36 1/2 | 66 1/2 | 90 1/2 | 103 | 115 |
| 2 7/8-3 | 2 7/16-2 5/8 | 21 | 59 | 86 | 110 | 122 | 134 | 13 3/8 | 3 1/4 | 5 1/4 | 41 | 68 | 92 | 104 | 116 |
| 3 1/4 | 2 11/16-2 3/4 | 21 | 61 | 88 | 112 | 124 | 136 | 14 1/8 | 3 1/2 | 5 3/4 | 42 1/2 | 69 1/2 | 93 1/2 | 106 | 118 |
| 3 1/2 | 2 7/8-3 | 21 | 63 | 90 | 114 | 126 | 138 | 15 1/4 | 3 3/4 | 6 3/4 | 45 | 72 | 96 | 108 | 120 |
| 3 3/4 | 3 1/8-3 1/4 | 24 | 70 | 94 | 118 | 130 | 142 | 17 1/4 | 4 | 7 | 50 | 74 | 98 | 110 | 122 |
| (none) | 3 3/8-3 1/2 | 24 | 75 | 99 | 123 | 135 | 147 | 18 5/16 | 4 1/4 | 7 1/4 | 53 | 77 | 101 | 113 | 125 |
| 4 | 3 5/8-3 3/4 | 24 | 80 | 104 | 128 | 140 | 152 | 19 3/8 | 4 1/2 | 7 1/2 | 55 1/2 | 79 1/2 | 103 1/2 | 115 1/2 | 127 |
| 4 1/4-4 3/8 | 3 7/8-4 | 24 | 84 | 108 | 132 | 144 | 156 | 20 7/16 | 4 3/4 | 7 3/4 | 57 1/2 | 81 1/2 | 105 1/2 | 117 1/2 | 129 |
| 4 1/2-4 3/4 | 4 1/8-4 3/8 | 25 | 87 | 110 | 134 | 146 | 158 | 20 | 5 | 7 1/4 | 59 1/2 | 82 | 107 | 118 1/2 | 130 |
| 5-5 1/4 | 4 1/2-4 3/4 | 27 | 90 | 111 | 135 | 147 | 159 | 21 | 5 1/4 | 7 1/2 | 62 | 83 | 109 | 119 | 131 |
| 5 1/2-5 3/4 | 4 7/8-5 1/8 | 30 | 96 | 114 | 138 | 150 | 162 | 22 | 5 1/2 | 8 | 67 | 85 | 111 | 121 | 133 |
| 6 | 5 1/4-5 1/2 | 31 | 99 | 117 | 141 | 153 | 165 | 23 | 5 3/4 | 8 1/2 | 69 1/2 | 87 1/2 | 113 | 123 1/2 | 135 |



| TH for Take-Up | | | | | | | | | | Wt. (lbs.) Take-Up | | | | |
|----------------|---------|-------|--------|--------|--------|--------|---------|-------|----------|--------------------|------|------|------|------|
| J | K | O | Std. | 48" | 72" | 84" | 96" | Q | S | Std. | 48" | 72" | 84" | 96" |
| 3 1/8 | 2 1/8 | 1 1/4 | 10 1/2 | 49 1/2 | 73 1/2 | 85 1/2 | 97 1/2 | 5/8 | 4 3/4 | 9 | 16 | 19 | 21 | 23 |
| 3 1/4 | 2 1/2 | 1 1/2 | 10 3/4 | 49 3/4 | 73 3/4 | 85 3/4 | 97 3/4 | 13/16 | 5 7/8 | 16 | 26 | 29 | 31 | 35 |
| 4 3/8 | 3 1/4 | 1 3/4 | 11 1/4 | 50 1/4 | 74 1/4 | 86 1/4 | 98 1/4 | 1 | 6 1/2 | 28 | 45 | 50 | 54 | 60 |
| 5 | 3 3/4 | 2 | 11 1/2 | 50 1/2 | 74 1/2 | 86 1/2 | 98 1/2 | 1 1/8 | 7 3/8 | 40 | 62 | 69 | 75 | 83 |
| 5 13/16 | 4 1/8 | 2 1/4 | 11 3/4 | 50 3/4 | 74 3/4 | 86 3/4 | 98 3/4 | 1 1/4 | 8 1/8 | 55 | 82 | 90 | 98 | 106 |
| 6 | 4 11/16 | 2 1/2 | 15 | 51 | 75 | 87 | 99 | 1 1/2 | 8 5/8 | 68 | 98 | 109 | 119 | 129 |
| 6 1/4 | 4 3/4 | 3 | 15 1/2 | 51 1/2 | 75 1/2 | 87 1/2 | 99 1/2 | 1 5/8 | 9 3/4 | 100 | 143 | 157 | 169 | 185 |
| 6 7/16 | 5 1/4 | 3 | 15 3/4 | 51 3/4 | 75 3/4 | 87 3/4 | 99 3/4 | 1 5/8 | 10 7/16 | 124 | 173 | 189 | 207 | 223 |
| 6 11/16 | 6 3/8 | 3 1/2 | 19 1/4 | 52 1/4 | 76 1/4 | 88 1/4 | 100 1/4 | 2 | 11 11/16 | 108 | 239 | 260 | 280 | 302 |
| 7 7/8 | 7 1/4 | 4 | 19 3/4 | 52 3/4 | 76 3/4 | 88 3/4 | 100 3/4 | 2 1/4 | 13 1/8 | 249 | 323 | 350 | 376 | 404 |
| 8 11/16 | 8 1/8 | 4 1/2 | 23 1/4 | 53 1/4 | 77 1/4 | 89 1/4 | 101 1/4 | 2 1/2 | 14 3/4 | 356 | 439 | 463 | 497 | 531 |
| 10 1/8 | 8 3/4 | 5 | 23 3/4 | 53 3/4 | 77 3/4 | 89 3/4 | 101 3/4 | 2 3/4 | 16 1/2 | 485 | 586 | 627 | 647 | 707 |
| 11 13/16 | 9 3/4 | 5 3/8 | 24 1/4 | 54 1/4 | 78 1/4 | 90 1/4 | 102 1/4 | 3 | 18 | 610 | 730 | 778 | 826 | 874 |
| 12 13/16 | 10 5/8 | 6 | 27 3/4 | 54 3/4 | 78 3/4 | 90 3/4 | 102 3/4 | 3 1/4 | 19 1/4 | 776 | 903 | 960 | 1018 | 1072 |
| 12 1/2 | 11 1/4 | 6 1/4 | 28 1/4 | 55 1/4 | 79 1/4 | 91 1/4 | 103 1/4 | 3 1/2 | 20 1/4 | 882 | 1030 | 1095 | 1161 | 1225 |
| 15 1/4 | 11 7/8 | 7 1/2 | 28 3/4 | 55 3/4 | 79 3/4 | 91 3/4 | 103 3/4 | 3 3/4 | 22 | 1180 | 1349 | 1425 | 1499 | 1575 |
| 17 1/8 | 13 | 7 3/4 | 32 1/4 | 56 1/4 | 80 1/4 | 92 1/4 | 104 1/4 | 4 | 24 | 1508 | 1679 | 1765 | 1851 | 1935 |
| 19 1/4 | 13 7/8 | 8 | 32 3/4 | 56 3/4 | 80 3/4 | 92 3/4 | 104 3/4 | 4 1/8 | 26 | 1621 | 1821 | 1917 | 2013 | 2109 |
| 18 1/4 | 12 3/4 | 8 1/4 | 33 1/4 | 57 1/4 | 81 1/4 | 93 1/4 | 105 1/4 | 4 1/2 | 27 5/8 | 2031 | 2251 | 2360 | 2468 | 2129 |
| 20 | 13 7/16 | 8 1/2 | 33 3/4 | 57 3/4 | 81 3/4 | 93 3/4 | 105 3/4 | 4 3/4 | 29 7/16 | 2444 | 2684 | 2805 | 2925 | 3047 |
| 20 | 14 | 8 1/4 | 36 | 58 1/2 | 82 1/2 | 94 1/2 | 106 1/2 | 5 1/4 | 28 | 2310 | 2480 | 3100 | 3234 | 3368 |
| 21 1/4 | 14 7/8 | 8 1/2 | 37 | 59 1/2 | 83 1/2 | 95 1/2 | 107 1/2 | 5 3/4 | 30 1/4 | 2910 | 3130 | 3680 | 3828 | 3976 |
| 22 3/4 | 16 | 8 3/4 | 40 1/2 | 60 1/2 | 84 1/2 | 96 1/2 | 108 1/2 | 6 1/4 | 31 1/2 | 3425 | 3625 | 4120 | 4762 | 4442 |
| 24 1/2 | 17 | 9 | 41 1/2 | 62 | 86 | 98 | 110 | 6 1/2 | 33 | 4165 | 4400 | 4600 | 4778 | 4956 |